



ROYAL HASKONING

thinking in
all dimensions

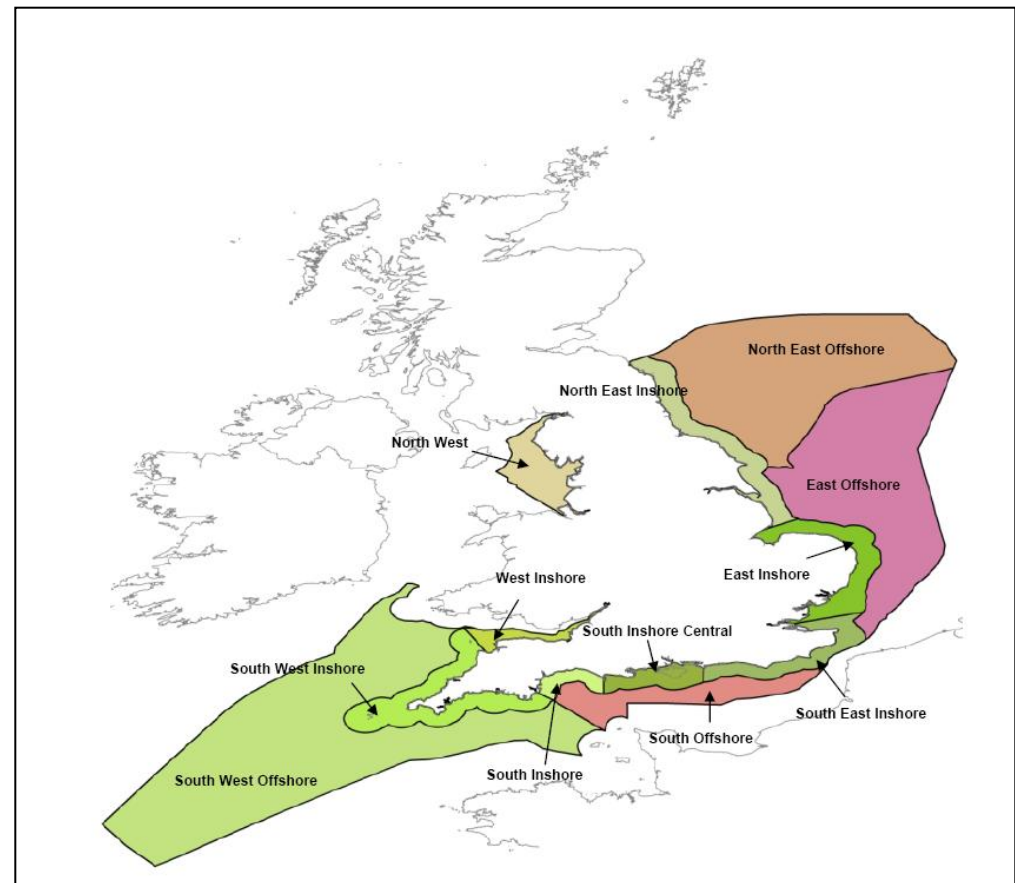
Marine Spatial Planning –
maximising opportunities, learning from experience

Mat Cork & Paolo Pizzolla

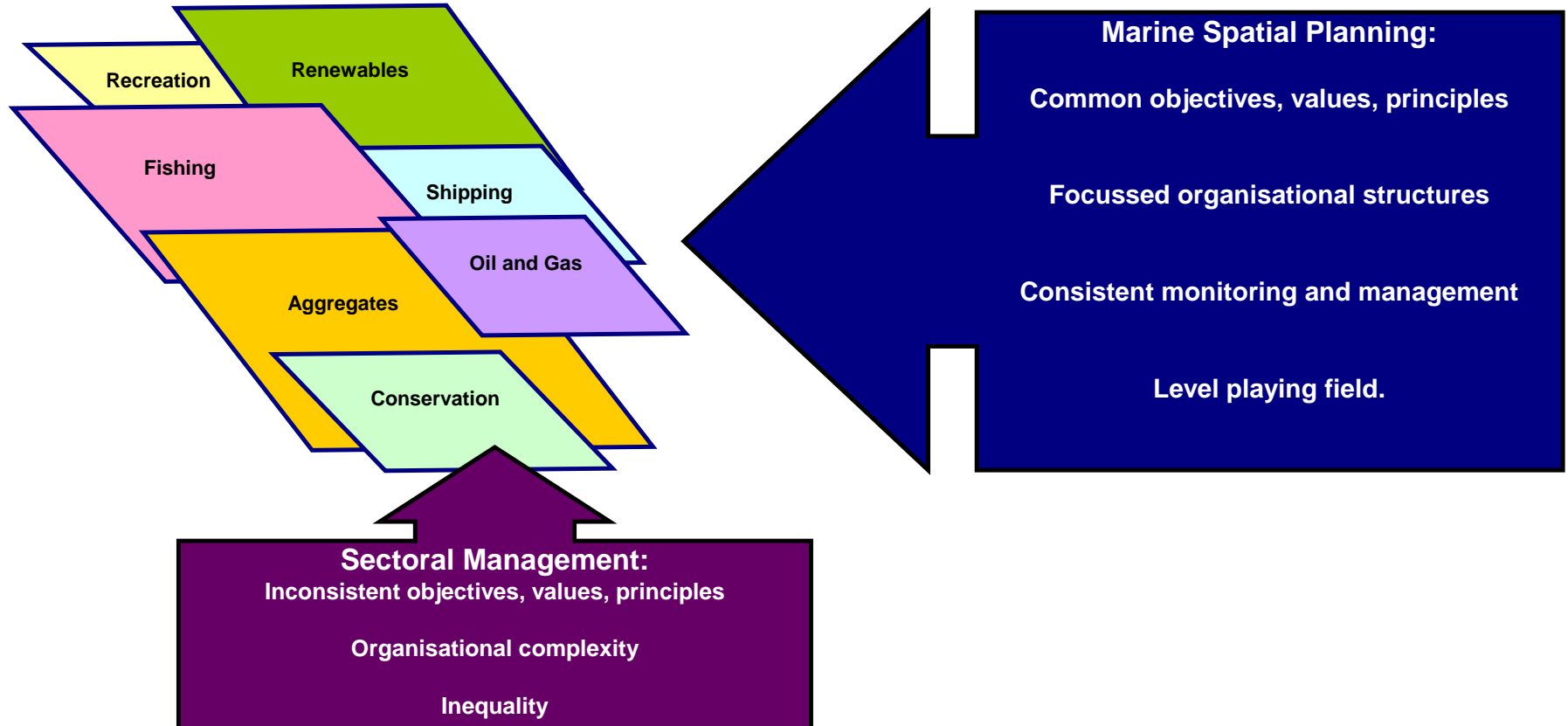
Background



- Draft planning boundaries for MSP (England & Offshore)
- Spatial focus already established – practical and biogeographic considerations
- Provides an opportunity to review sectorally based activities under a spatial structure



The Potential of Marine Spatial Planning



Marine Spatial Planning - The New Black?



- ICZM
- EC definition – 8 principles (2002)
- Scaling up and embedding
- Will MSP deliver it's promise to offer a more focussed and rational approach to sustainable management of the marine environment?



Don't we already do this? Strategies & Policies



- Irish Sea Pilot
- Coastal Partnerships
- SEA process
- Compliance with EU Directives (Natura, WFD) – Offshore Conservation Objectives
- The development of the MPA network

BUT

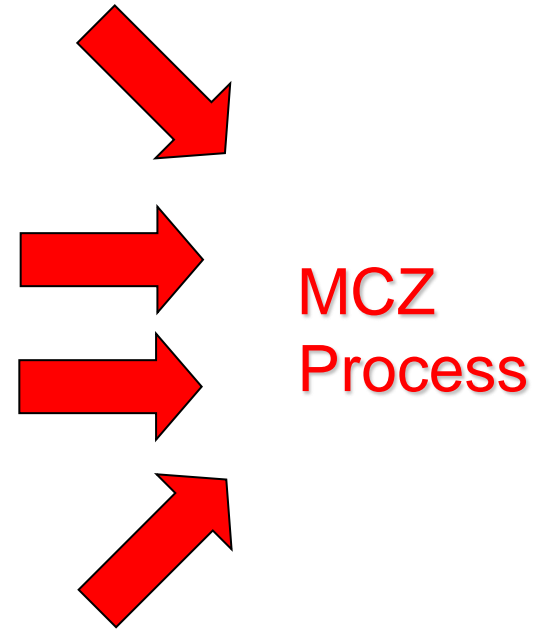
MSP can provide the structure for these initiatives to be brought together as a functional whole



Don't we already do this? Principles for the UK



- *From Pre-consultation on Draft UK Marine Policy Statement*
- Conducted in a manner that is consistent with statutory requirements under UK and EU legislation and our obligations under international law;
- Conducted in a way that takes into account all of the relevant UK administrations' policy objectives affecting the marine area
- Conducted in a manner that takes account of other relevant projects, programmes, plans and national policies and guidance;
- Participative and informed by points raised by consultees and stakeholders;
- Streamlined where possible, making effective use of existing data;
- Forward looking including horizon scanning to anticipate possible future demands; and
- Based on an ecosystem approach.



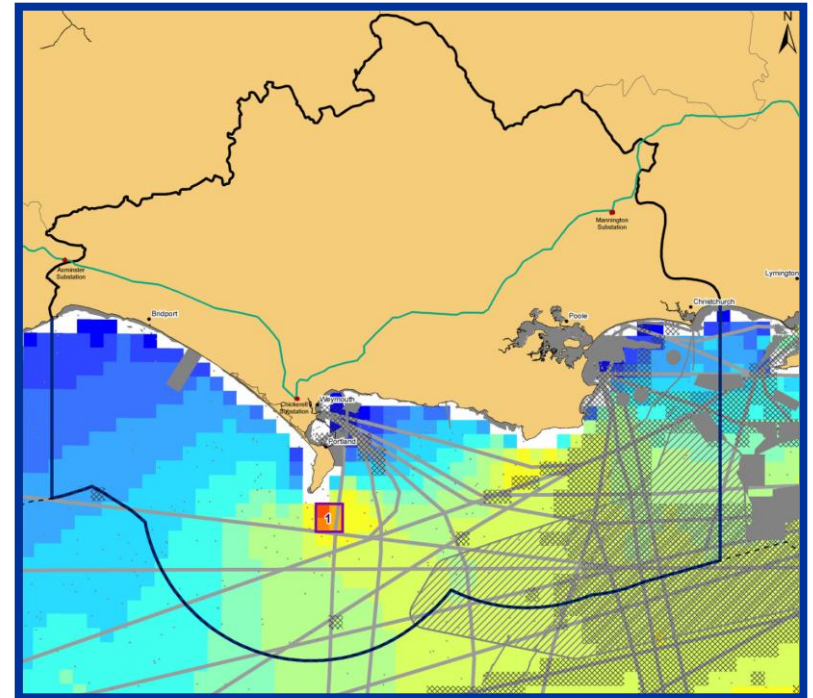
Don't we already do this? Constraints Mapping



Constraints for each sector differ, but are either **hard** or **soft**

Hard constraints are common to all sectors and include technological limits, climate, presence of structures or shipping routes etc.

Soft constraints relate to matters which can be addressed through management, mitigation or mutual agreement

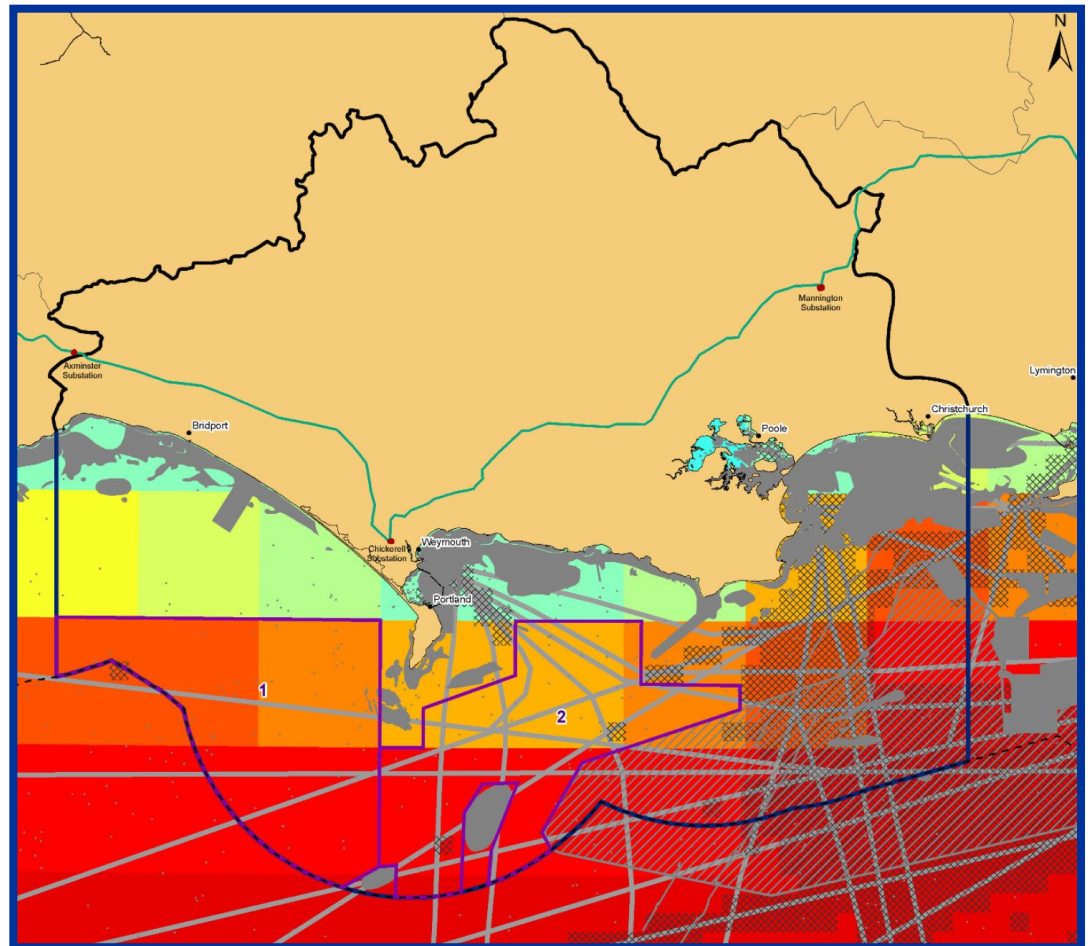


Constraints mapping



Constraints:

- Enough wind?
- Other industries?
- Other activities?



Constraints

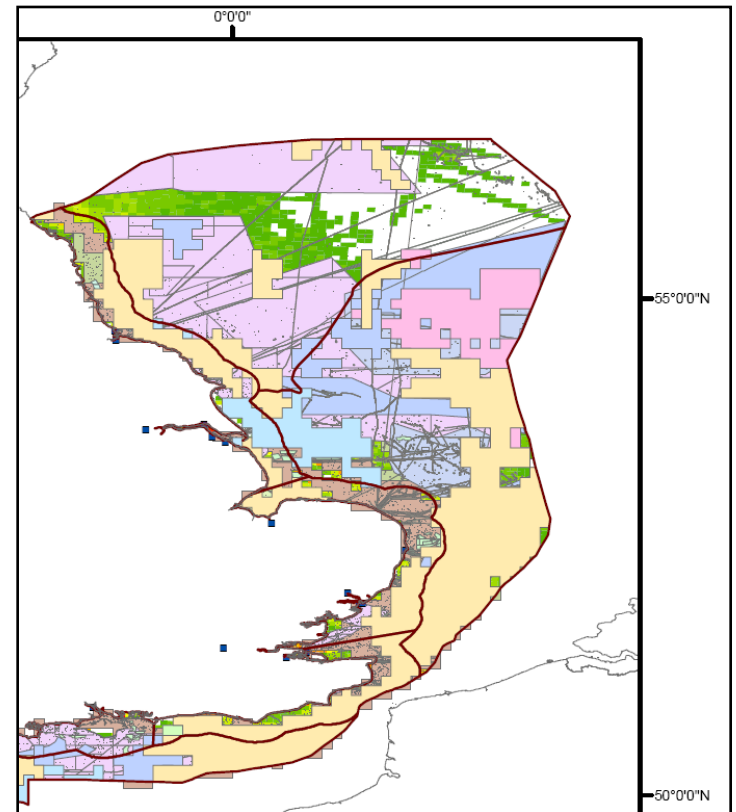


After we have mapped the hard constraints we know where we definitely cannot undertake an activity

Deciding where to site the activity is then a mix of:

- Optimal siting
- No / least conflict
- Policy

How do we make these complex decisions?



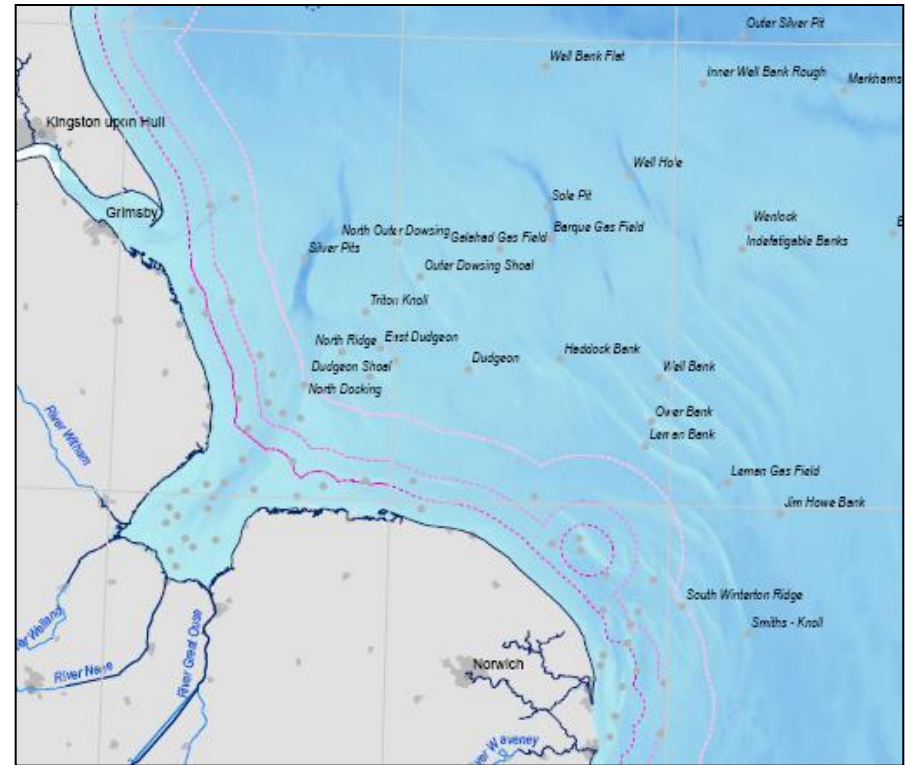
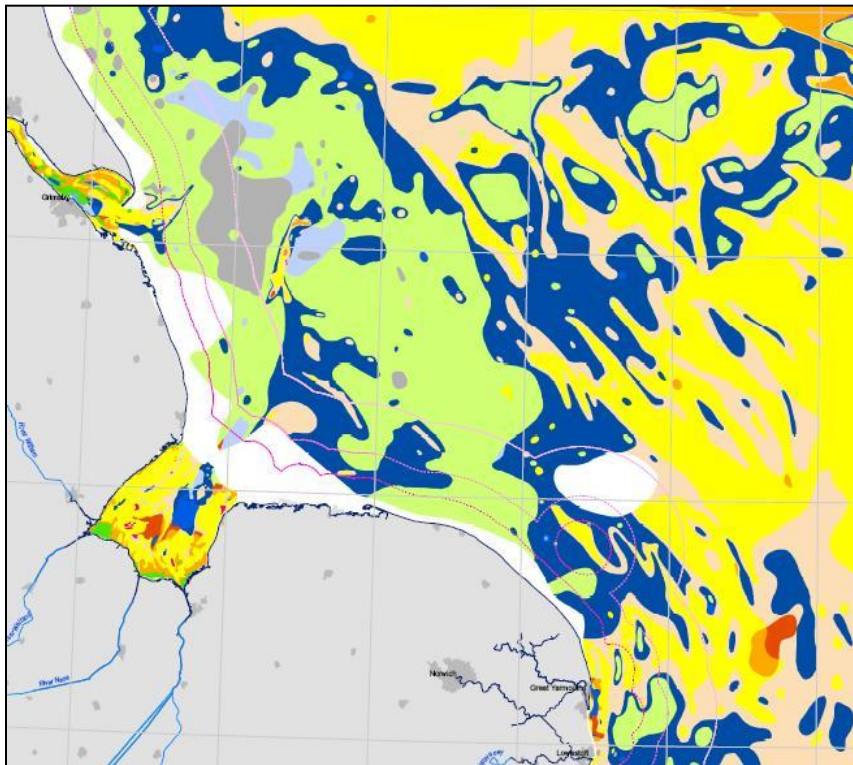
So what can we learn? Shoreline Management Plans



- Core issues with SMP production:
 - Existing management patterns complex
 - Spatial complexity of management
 - Uncertainty of coastal processes and system response
 - Long plan time period (100 yr timeline)
- Similar issues will be faced with MSP



A common language



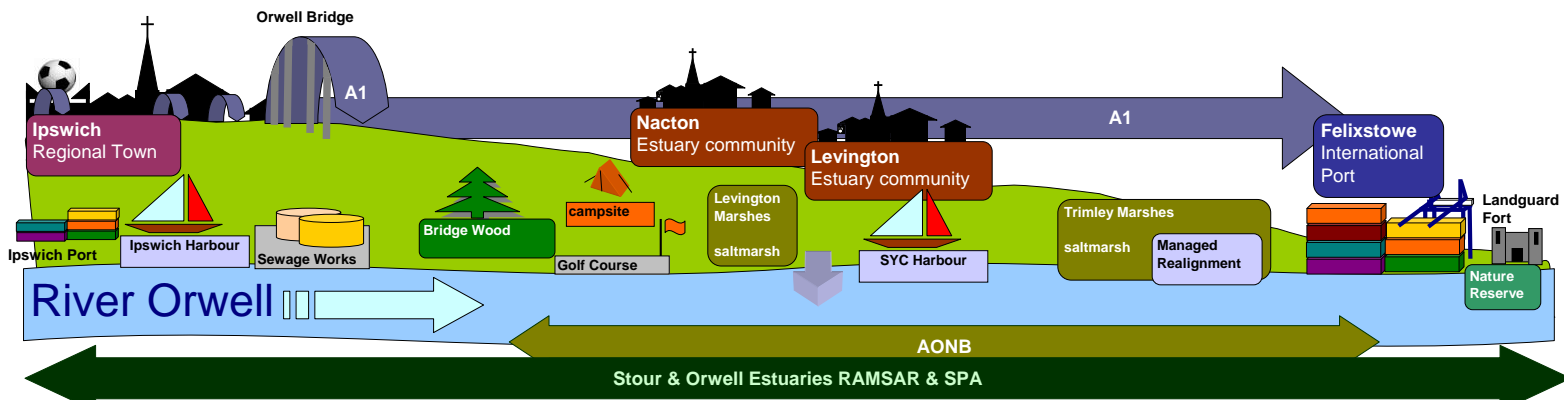
'Pictureanalysis'



- Simple view, easy to place values graphically
- Replaces / supplements dense text / databases
- Enables a clearer understanding of spatial issues
- Effects of potential policy can be clearly seen and understood by all stakeholders
- Successful approach used for Wash, North Norfolk and Essex SMPs

River Orwell Mid-Estuary

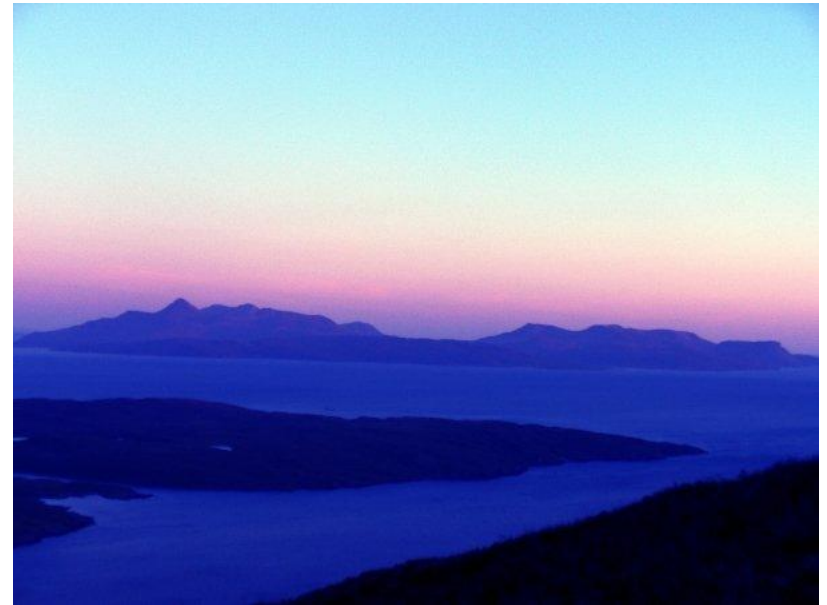
River Orwell North Bank



Values and SEA Approach



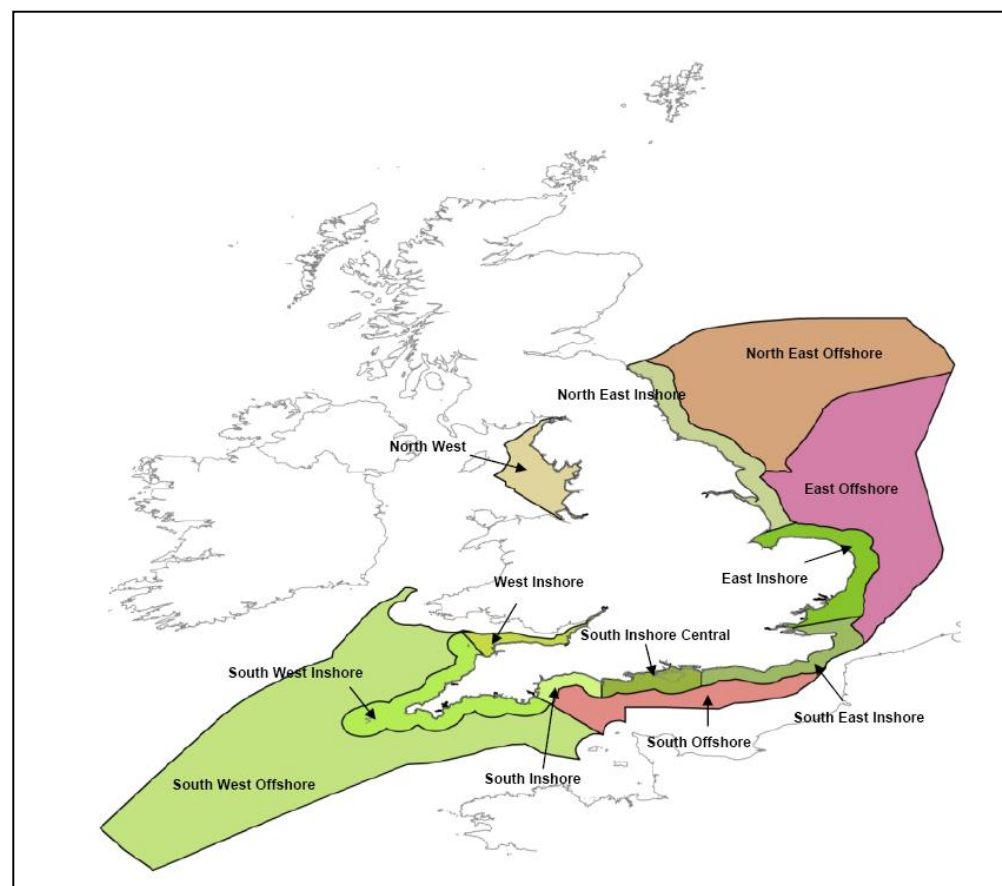
- Values based approach
 - Describes the environment in terms of core values – e.g. water quality, habitat, aggregate resource, recreational activity etc
 - Simple classification of the building blocks of patterns of use in an area
 - Common language for management across sectors
- SEA based approach
 - Common criteria for assessment of policy across all sectors



A question of scale – one size fits all?



- Inshore vs Offshore
 - Data coverage
 - Number of activities and stakeholders
 - Personal stakes
- NIMBY vs IROPI
 - Strategic versus the personal
 - How does new government localism fit in?
 - Does the inshore offshore split get round this?



Challenges



- Fisheries – not static
 - Displacement
 - Mobile species
 - Natural change
 - Climate change
- Thinking in all dimensions (at least 4)
- Management needs to look at all these complexities and be responsive and equitable



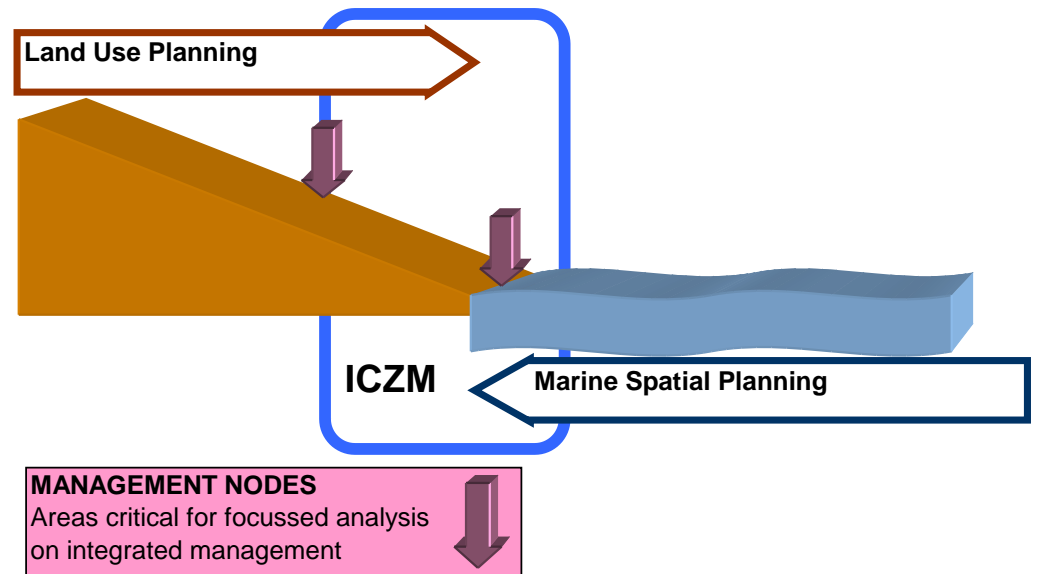
ROYAL HASKONING

thinking in
all dimensions

Challenges



- Requires a position shift for all sectors of marine management
- Needs to address 'nodes' where legislative and management systems interact (land/sea, MSP area boundaries, national, international)



Conclusions



- MSP complex in space, time and politics
- Participatory process, therefore –
- Tools to address the complexity while providing clear solutions
- Need for a common language & principles to ensure inclusivity and interest
- Synthesize current best practice in order to progress

