



FINDING
SANCTUARY

Socio-Economics and Marine Conservation Zones

by Rupert Haines, Finding Sanctuary
and
Francesca Moore, Irish Seas Conservation Zones

Marine Conservation Zones



- New type of marine protected area provided for through the Marine and Coastal Access Act 2009
- Protect a wide range of UK habitats and species and fulfil international agreements and commitments
- Socio-economic impacts may be taken into account in planning

'the appropriate authority may have regard to any economic or social consequences of (designating a MCZ)' Marine and Coastal Access Act Section 117 (7)'



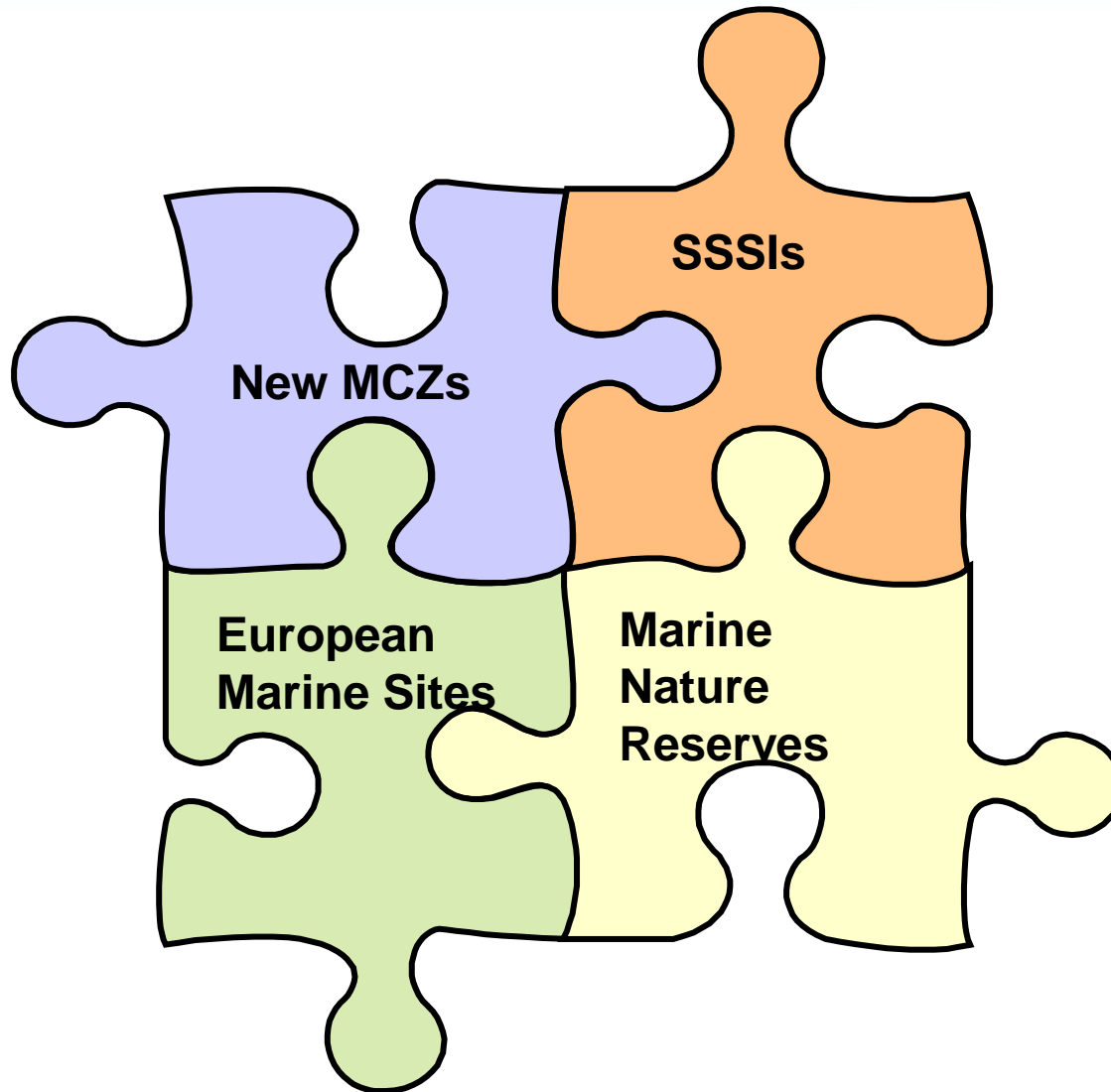
Ecological Network Guidance



- List of nearly 80 'Broad-scale Habitats' and 'Habitat & Species of Conservation Importance' as well as features of geomorphological interest
- Based on seven design principles
- Areas of additional ecological importance
- Aim: To achieve a 'well managed ecologically coherent network of marine protected areas'



Network of Marine Protected Areas



Regional Projects

Map: C.1.2.1 England's regional MCZ planning projects

Version: Mar09

Notes: no

Docs: no

Map showing the boundaries of the areas covered by England's four regional MCZ planning projects, of which Finding Sanctuary is one.

Projected to utm zone 30N. Distortion minimal in the SW region.



- Remit: provide MCZ recommendations;
- Iterative process:
 - June 2010
 - October 2010
 - February 2011
 - June 2011 (Final)

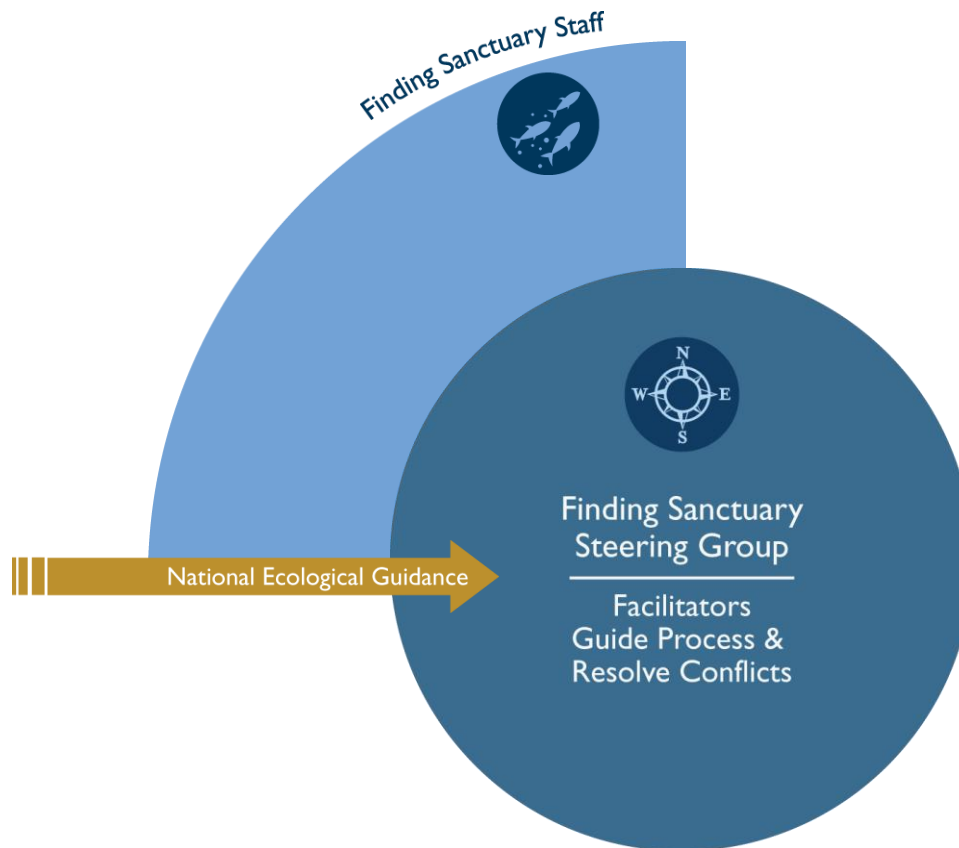
How are socioeconomic factors taken into account?



Two key mechanisms:

1. The planning process
2. The MCZ Impact Assessment

The planning process: basic regional project structure



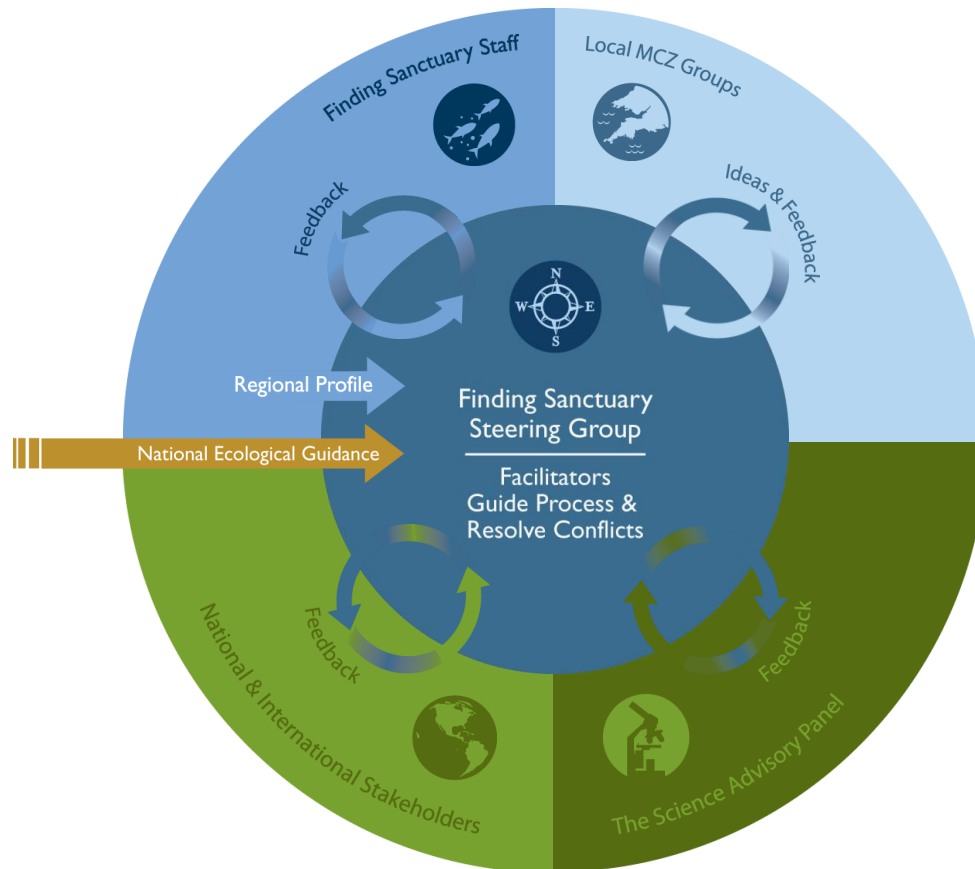
Why involve stakeholders?



- A new and innovative approach to stakeholder engagement in policy making:
- Benefits:
 - Generates understanding
 - Allows greater 'buy-in' (hopefully)
 - Brings forward difficult discussions
 - Allows socioeconomic factors to be directly brought to the planning table



Full Regional Project Structure

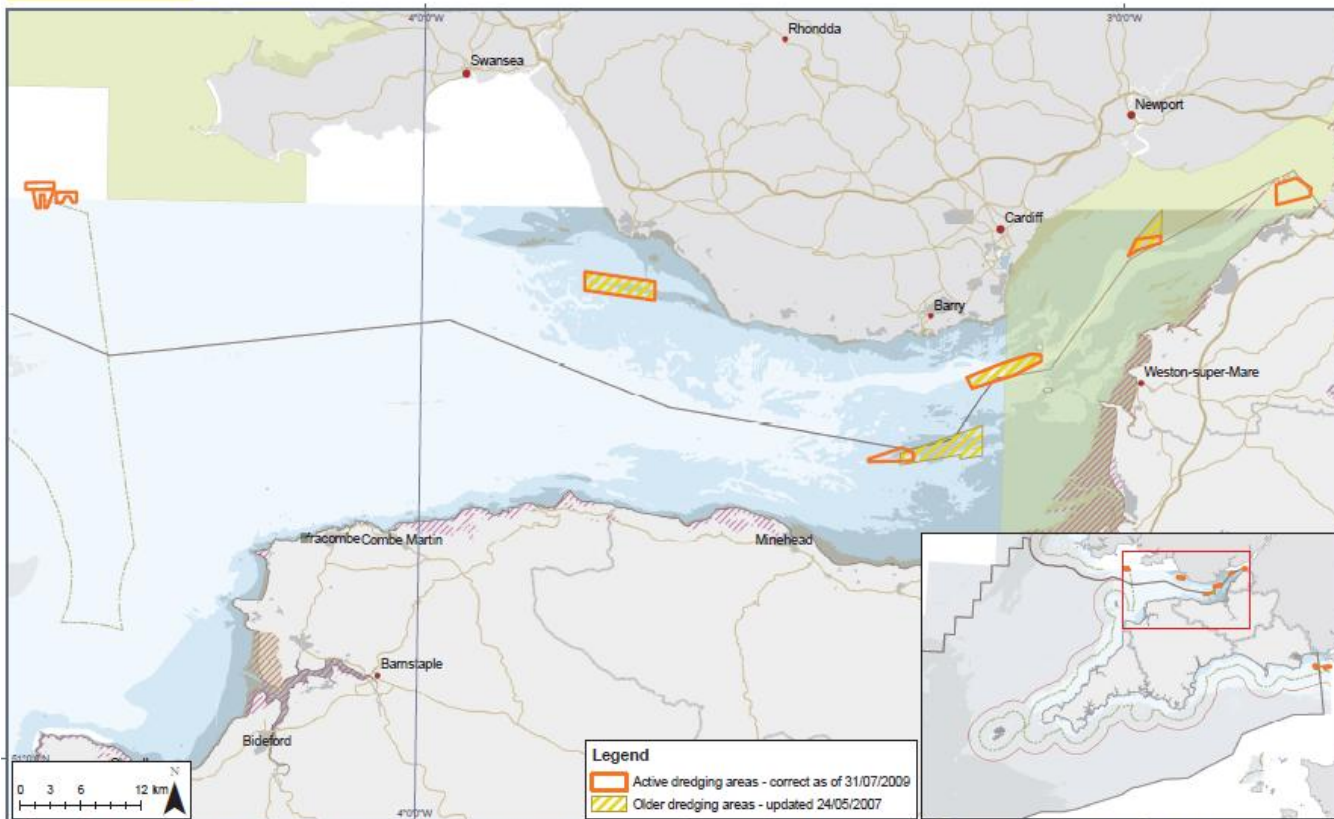


Socioeconomic Information

Map: C.9.1.1
Version: Nov09
Notes: no
Docs: no

Aggregate license areas in the Bristol Channel (preliminary map)

Active dredging areas provided by Crown Estates and are correct as of 31/07/2009. Other dredging areas provided by Crown Estates through Seazone Hydrospatial, updated 24/05/2007. This is a preliminary map, it is anticipated that it will be replaced with a more detailed version describing aggregate licensing and extraction over the last 10 years.



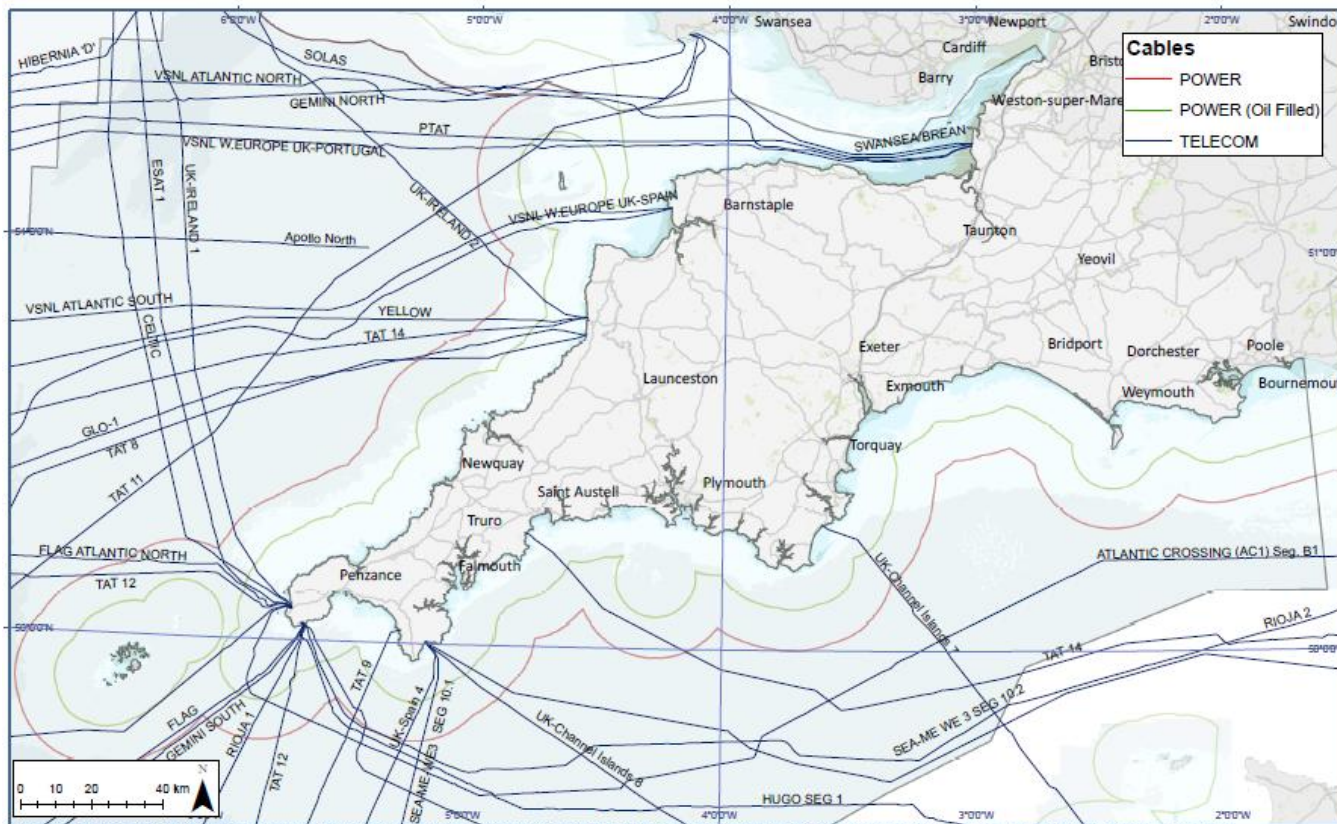
Maritime basemap, coastline © Crown Copyright, all rights reserved (2009) SeaZone Solutions Ltd products licence no. 042006 003. Not to be used for navigation. Land basemap part © OpenStreetMap & contributors, CC-BY-SA. This map is part of a series with accompanying notes.

Socioeconomic Information

Map: C.8.1.2
Version: Feb10
Notes: no
Docs: no

Submarine cables - SW coastal map

Cables information provided by Kingfisher as part of the Kingfisher Cable Awareness (KIS-CA) charts.



Maritime basemap, coastline © Crown Copyright, All rights reserved (2005), Ordnance Survey Licence No: 01003003. Not to be used for navigation. Land basemap part © OpenStreetMap & contributors, CC-BY-SA. This map is part of a series with accompanying notes.

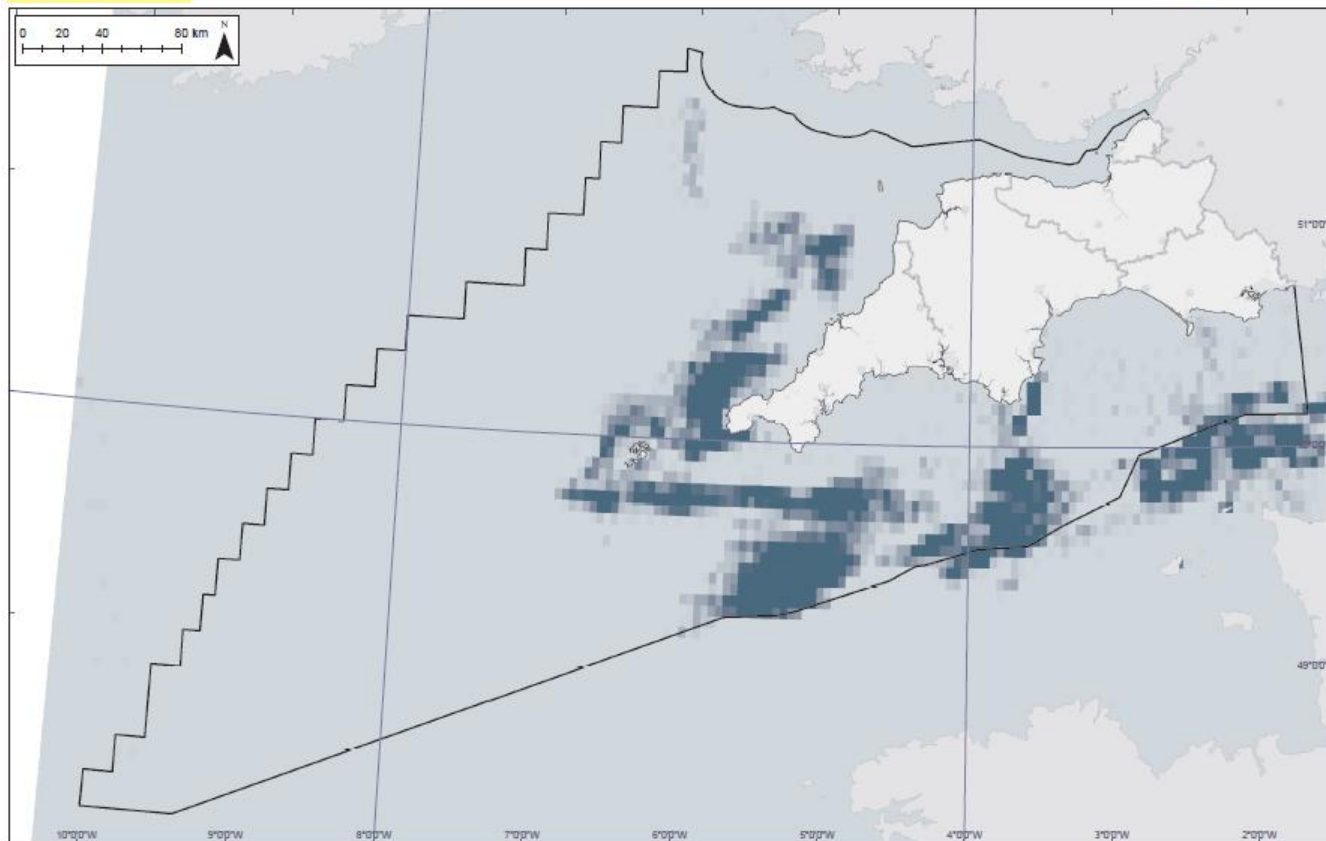
Socioeconomic Information



Map: C.6.2.9
Version: Jun10
Notes: no
Docs: no

Distribution of fishing effort (VMS data): Pots

Distribution of fishing effort described by VMS data (averaged over 2006-2007). EU and UK fleets (only UK vessels outside British national waters). VMS data processed by Cefas for Defra led contract MB106.



Maritime basemap, coastline © Crown Copyright, all rights reserved (2009). SeaZone Solutions Ltd. products licence no. 042006.003. Not to be used for navigation. Land basemap part © OpenStreetMap & contributors, CC-BY-SA. This map is part of a series with accompanying notes.

Data collection: Liaison Staff



Key socioeconomic surveys:

- Fishermap
- Stakmap



Data Collection: Web GIS



MCZ Interactive Map - Windows Internet Explorer

http://www.mczmapping.org/#

Convert Select

Favorites Suggested Sites Google Remote E-mail Access

MCZ Interactive Map

Home View Add FAQs Help

MCZ Project Interactive Map

BalancedSeas FINDING SANCTUARY Irish Sea Conservation Zones netgain

Welcome FSTom(Divers) You are now logged in and able to input information. [Manage Roles](#) [Logout](#) [Edit Details](#)

View larger map Search: Find Marine Standard

View

Reset Map

- Area outside project limits
- Stakeholders
- Finding Sanctuary
 - Anglers
 - Charter boats
 - Very high
 - High
 - Medium
 - Low
 - Very low
 - Commercial fishing
 - Very high
 - High
 - Medium
 - Low
 - Very low
 - Divers
 - Very high
 - High
 - Medium
 - Low

Through MCZ Interactive Map you can see different information layers. Use the map controls to locate, zoom and pan and the tick

Data CC-BY-SA by OpenStreetMap

Open Street Map: The purple 12nm limit is incorrect, turn on the UK National limits layer for the correct line.
Divers: Stakeholder data cannot be compared between the MCZ Project Regions.

Internet | Protected Mode: Off 100%

10:52 21/06/2010

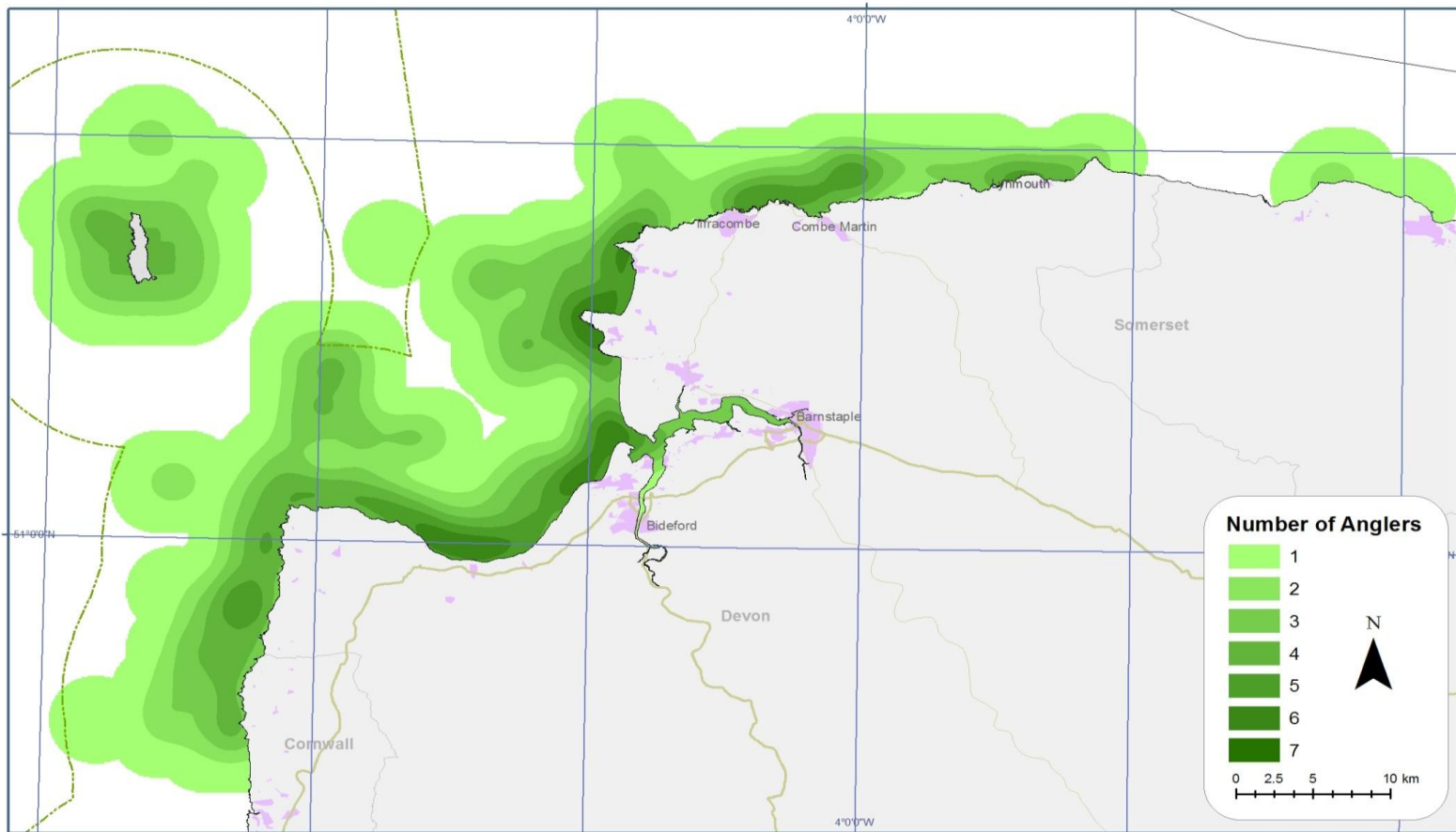
Stakeholder Mapping



Map: D.2.1.1
Version: Interim
Notes: yes
Docs: no

Angling activity on North Devon coast.

Map shows number of individuals reporting use of an area within the period 2003 - 2008. Information derived from a survey of 20 anglers carried out by Sarah McClintock as part of her MSc thesis.



Key Points



- Stakeholder knowledge brought directly to the planning table
- Formal information presented clearly in a format that enables it to be engaged with
- Good facilitation





HM TREASURY

THE GREEN BOOK

Appraisal and Evaluation in Central Government

IMPACT ASSESSMENT

TOOLKIT

*A guide to undertaking an Impact Assessment
and completing the IA Template*

- (Extended) Cost-Benefit Analysis
- Best available evidence
- Five Impact Assessments–
Regional (x4); National (x1)
- Purpose
 - Descriptions of socioeconomic activities
 - Feedback mechanism for Regional Steering Group
 - Decision-making tool for Defra

- Iterative process:
 - June 2010
 - October 2010
 - February 2011
 - June 2011
- Incremental evidence gathering and stakeholder engagement
- Published IA iterations allowing staged stakeholder comment and feedback prior to Public Consultation
- Feedback into the planning process
- IA progress is tied to the planning process

Is it working (so far)? The key points...



- Socioeconomics are being directly brought into the planning of MCZs
 - Steering Group and other stakeholder groups
 - Impact Assessment
- Shared understanding of impacts on 'other' socioeconomic sectors and environment
- Socio-economics are influencing stakeholder discussions on where pMCZs should go
- The location, shape and potential restrictions within pMCZs are taking shape

Is it working (so far)? The key points...



- Stakeholders have found it difficult to shift from reactive to proactive engagement within a developing process
- Stakeholders may not agree with the idea of MCZs, but they realise they are better off working with the process than rejecting it
- An adapting and evolving process – allowing flexibility and ensuring clear, concise and timely communications
- Impact Assessment consultation that makes a difference

Thank you



www.irishseaconservation.org.uk

www.finding-sanctuary.org

www.netgainmcz.org

www.balancedseas.org