

GREATER LONDON AUTHORITY



Drain London:

A Summary of Challenges and Solutions for
Delivering 33 Surface Water Management Plans

CIWEM: Annual Conference

7 April 2011

Presenters:

Michael Arthur – Capita Symonds

Matthew Graham – URS / Scott Wilson

CAPITA SYMONDS



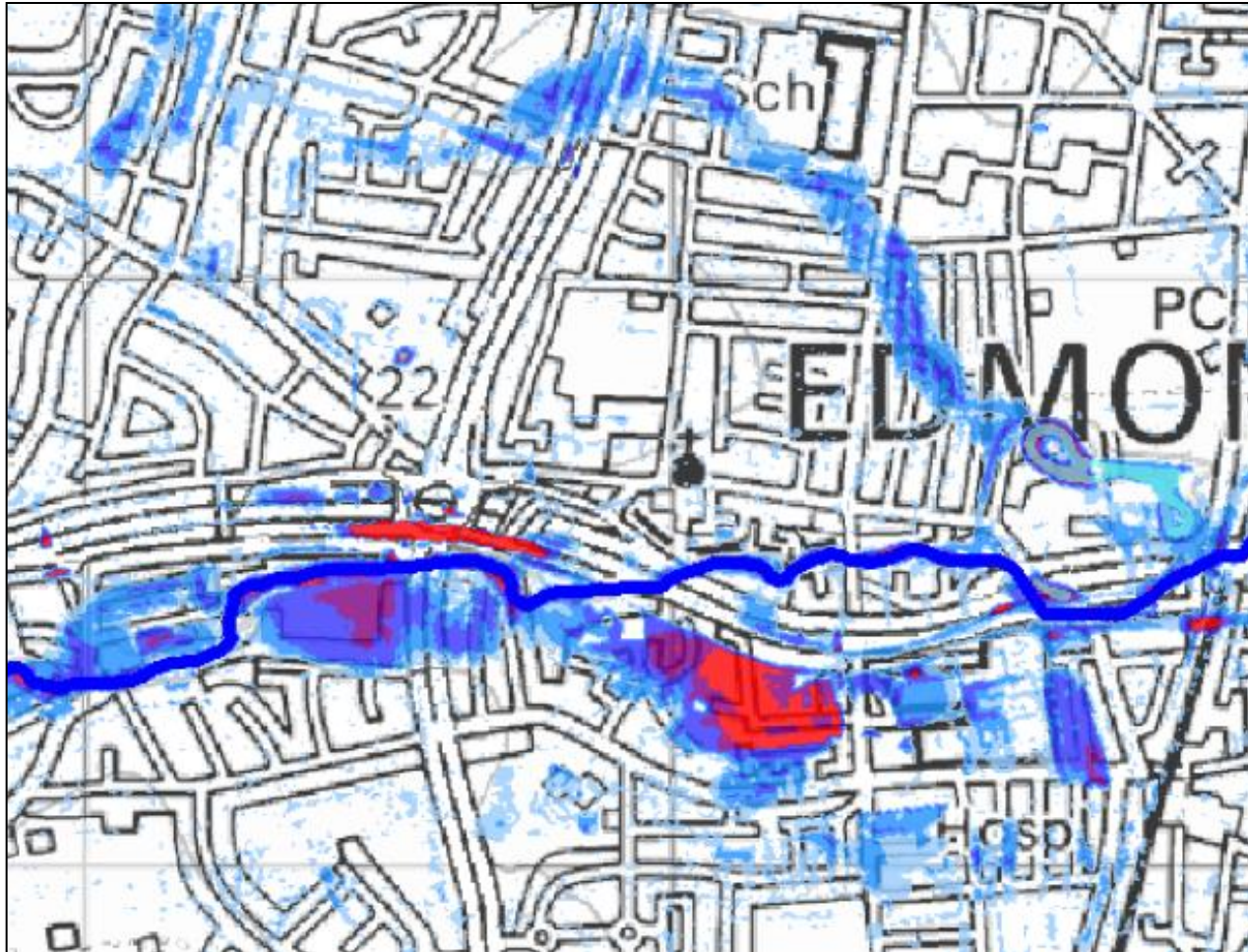
Flood Risk Management

Overview

**The largest collaborative surface
water management study in Europe**

Background

680,000 properties at risk of surface water flooding from a 1:200 year event (Environment Agency)



Drain London Forum

- Programme Board

GREATER LONDON AUTHORITY



- Forum
 - All 33 London Boroughs
 - Transport for London
 - Defra
 - London Technical Advisors Group

Objective

To manage and reduce surface water flood risk in London

By delivering 33 Surface Water Management Plans (SWMPs) and Preliminary Flood Risk Assessments (PFRAs)

Challenges and Solutions

Phase 1: Data Collection

- **Challenge:** *Collection, collation and management of a wide range of datasets*

- **Solution:**



*Metadata | Identification | Classification | Keyword | Geographic | Temporal |
Quality & Validity | Conformity | Constraints | Organisation*

Challenges and Solutions

Phase 2: Intermediate Risk Assessment

Challenge: *Delivering 33 SWMPs to a comparable technical standard and managing ongoing technical issues*

Solution:

SWMP Practitioners
Forum



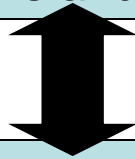
Challenges and Solutions

SWMP Practitioners Forum

Chairperson: Tier 1 Consultant
(directly supported by EA)

Responsibilities:

Chair Meetings, take minutes,
follow up actions and make decisions



Forum Members: Tier 2 Consultant
Technical Leads

Responsibilities:

Proactively contribute to discussions,
share details of methodologies
and previous experiences



Consulting



Challenges and Solutions

Phase 3: Options

- **Challenge:**
Delivering best value and pipeline schemes efficiently
- **Solution:** Identify opportunities for early action and capitalise on existing synergies



Challenges and Solutions

Phase 4: Action Plan

- **Challenge:** *Producing ‘realistic Action Plans’ with Council buy-in (top down and bottom up)*
- **Solution:** Run facilitated workshops at Group & Council level to support partnership delivery

GREATERLONDONAUTHORITY					DRAIN LONDON SURFACE WATER FLOOD ALLEVIATION FUNDING SCORE										Scott Wilson	
Scheme Name	Borough	Scheme type	Moderation	Override	Infrastructure				Households			Comm / Ind		Economics	Score	
					Essential	Highly V	More V	Score	Non-depr	Deprived	Score	Units	Score	Cost	Benefits only	Cost-adjusted
Example Scheme 1	Hounslow	Separate surface water	Deliverability	No	2	3	5	270	65	20	210	20	20	150,000	500	33
Example Scheme 2	Haringey	Flood storage / permeable	Environmental	No	1	1	4	150	40	40	240	8	8	165,000	398	24
Example Scheme 3	Lambeth	Source control	None	No	2	1	2	150	30	20	140	15	15	95,000	305	32

Conclusions

- Drain London provides a good model for delivery of cost efficient surface water flood risk management
- Encouraging cross-departmental working and development of sustainable flood risk partnerships

A Vision for the Future

- Used to aid the delivery of Water Framework Directive targets across London
- Potential to improve the links between water quality and flood risk management
- A real opportunity to reduce urban diffuse pollution
- Reduce ecological stress to river systems in London

Acknowledgements

GREATER LONDON AUTHORITY

- **Kevin Reid** – Principal Programme Manager
- **Alex Nickson** – Strategy Manager