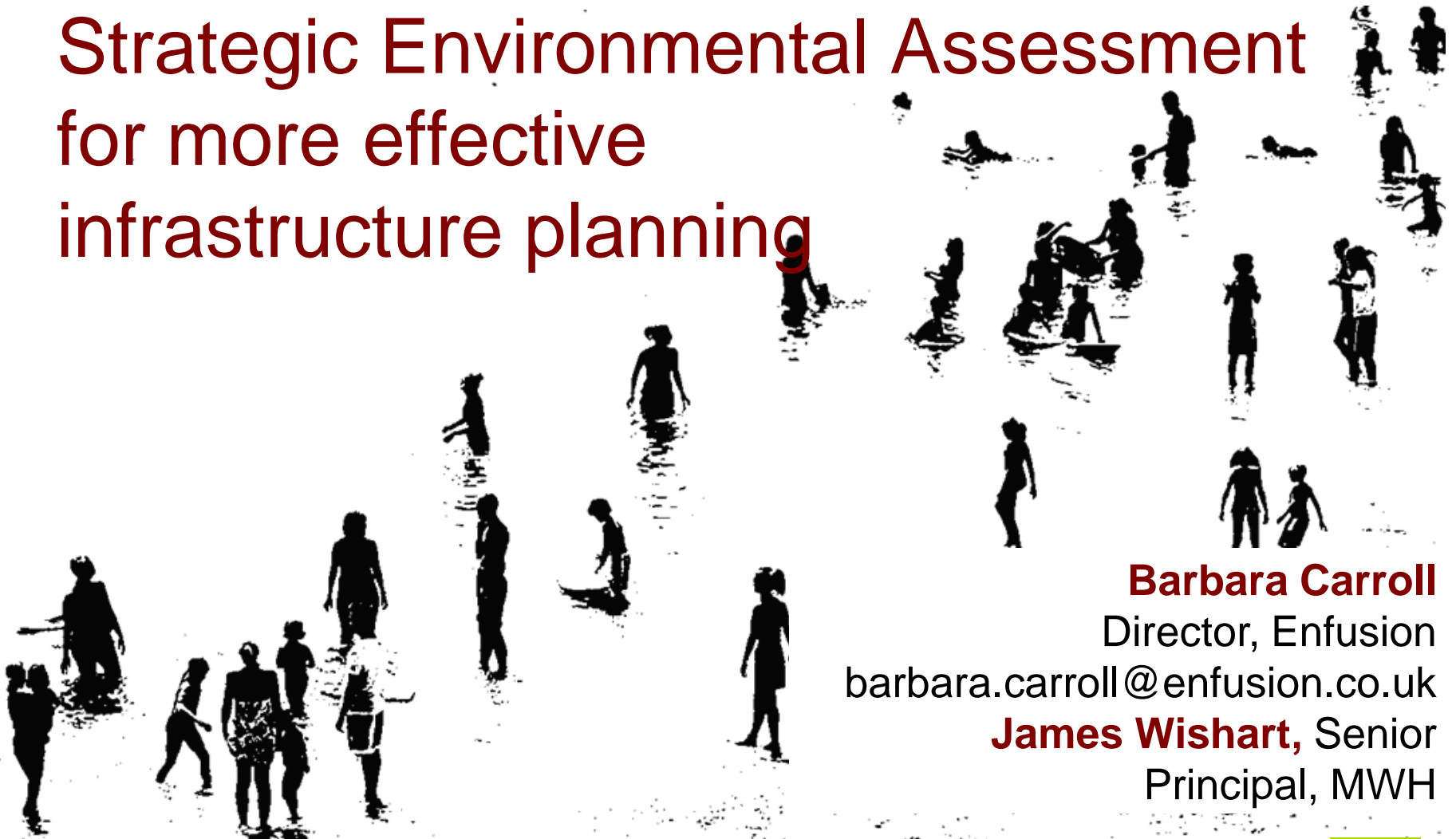


# Sustainability Appraisal & Strategic Environmental Assessment for more effective infrastructure planning



**Barbara Carroll**

Director, Enfusion

[barbara.carroll@enfusion.co.uk](mailto:barbara.carroll@enfusion.co.uk)

**James Wishart**, Senior

Principal, MWH



# Contents



- **SA & EA: history & context**
- **Where are we now?**
- **Localism & Big Society**
- **Case examples**
- **Opportunities for the future?**



# SA/SEA: history & context

- **Aims of SEA: high level of environmental protection & promotion of SD**
- **Water Plans requiring statutory SEA:**
  - Water Resources**
  - Strategic Flood Risk**
  - River Basin Management**
- **Other key Plans requiring statutory SA (with SEA):**
  - Spatial (land use & marine)**
  - National Policy Statements for NSIPs**
- **SA/SEA sets context for subsequent project level SA/EIA: hierarchy of plan making & tiering of assessments**
- **New EIA Regulations & Guidance**



# SA/SEA: where are we now?

- Over 8 years practical experience of SA/SEA in UK. Effectiveness studies:
  - DCLG on SA/SEA Spatial Plans (2010)
  - IEMA on EIA (2011)
  - IAIA on SA, SEA, EIA (2011)
- Key Issues:
  - Better focus to scoping
  - Level of detail should reflect the plan
  - Engaging public more
  - Alternatives; CEA
  - Environmental limits & ecosystems
  - Understandable NTSs!
- Recent Case Law:
  - SEA Forest Heath Core Strategy



# Planning & Localism: new & emerging issues

- **NPSs & NSIPs:**  
scoping for EIAs  
supporting SAs?
- **Loss of regional bodies & plans/strategies**  
many Councils are rethinking their DPDs  
loss of decision-aiding scale
- **Spending Review:**  
Councils & regulators will focus on key statutory duties
- **Localism**  
Neighbourhood Plans – may need SEAs  
increased public consultation/involvement



# SA/SEA: case examples



- **SA/SEA of draft Nuclear NPS for DECC: tiering of assessments**
- **Environmental limits for South East: water, climate change, biodiversity**
- **SA/SEA of site allocations DPDs in South Devon for South Hams Council: effective community participation**
- **SEA of RBMPs in England & Wales: cumulative effects assessment**



# Opportunities to use SA/SEA for more effective infrastructure planning



1. **Focus the scoping**
2. **Use SA/SEA to help mitigate for loss of regional/strategic spatial planning**
3. **Neighbourhood Plans**
4. **Increased public consultation & participation**
5. **Be creative...**

