



Don Norris

Civil Contingencies Manager



Joint Emergency Planning Unit
Denbighshire and Flintshire County
Councils



Extreme Flooding Phases

□ Impact



□ Stabilisation



□ Recovery



Impact Phase

- ❑ Loss of property
- ❑ Loss of life
- ❑ Loss of infrastructure



Preplanning

- ❑ Warnings
- ❑ Evacuation routes
- ❑ Public education for self help
- ❑ Emergency rest centres



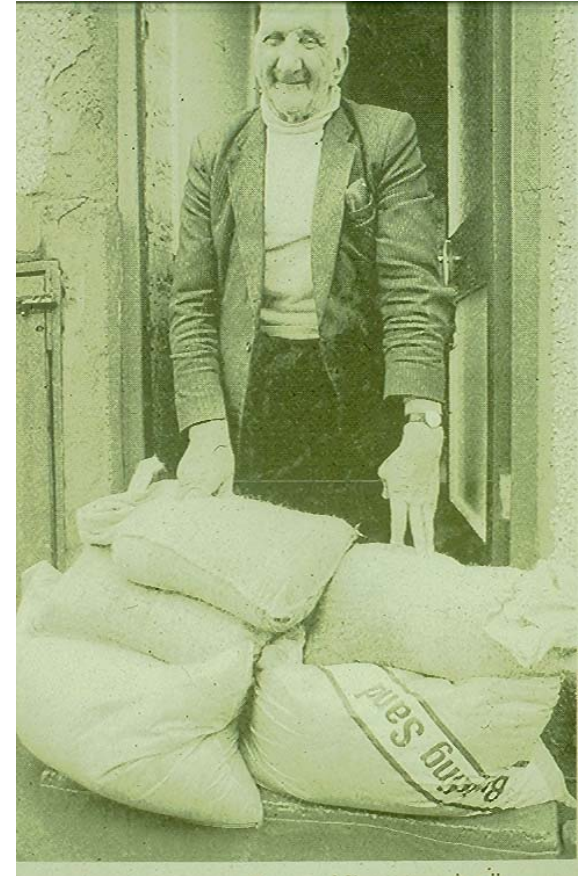
Stabilisation Phase

- ❑ Temporary re-housing
- ❑ Vulnerable support
- ❑ Advice, information and guidance
- ❑ Flood Defence repair



Preplanning

- ❑ List of location of vulnerable residents
- ❑ Pre determined advice/information booklets
- ❑ Alternative accommodation lists
- ❑ Multi agency arrangements



Recovery phase

Longer term provision:

- ❑ Regeneration of community
 - Social and Economic
- ❑ Outreach teams for the vulnerable
- ❑ Improved flood defences



Pre Planning

- ❑ Recovery Plans
- ❑ Outreach support process
- ❑ Pre-determined multi-agency recovery team





Conclusion

Many elements can be planned for but the usual constraints apply:

- ❑ Time
- ❑ Money
- ❑ Organisations capacity for risk

Most effective solutions will be found through partnership working with all responding agencies