

WATER FRAMEWORK DIRECTIVE

West Midlands CIWEM 7 December 2005

Dave Martin

WFD Policy Manager

creating a better place

Outline

Aims of the Directive

The River Basin Planning process

Stakeholder Engagement

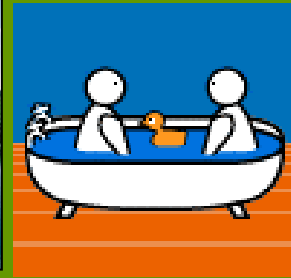
Agreeing objective

Programmes of Measures

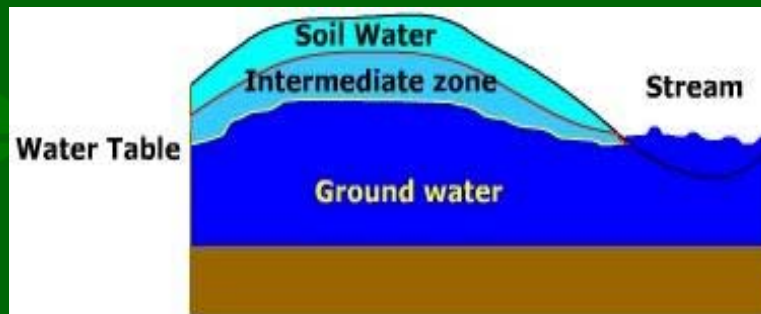
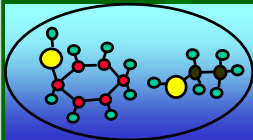
Further information

creating a better place

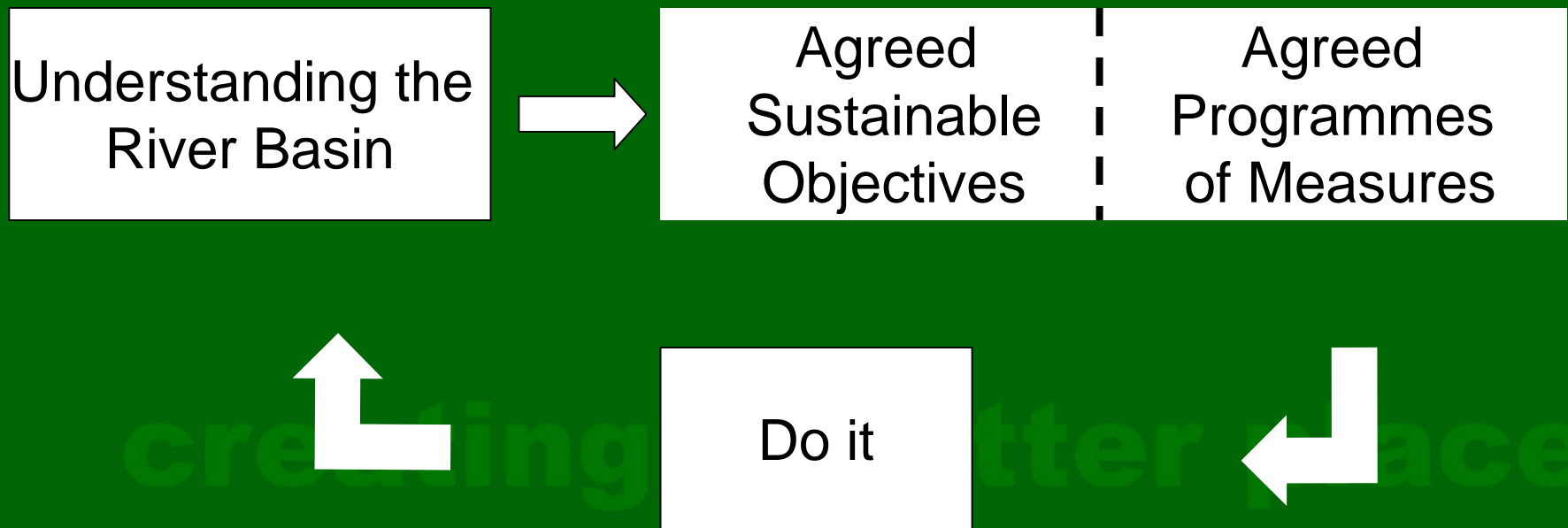
Aims



- Prevent deterioration, enhance status of aquatic ecosystems & associated wetland
- Promote sustainable water use
- Reduce pollution from priority substances
- Prevent deterioration/reduce pollution of groundwater
- Contribute to mitigating effects of floods/droughts



High-level Planning Process



What water bodies does the WFD cover?

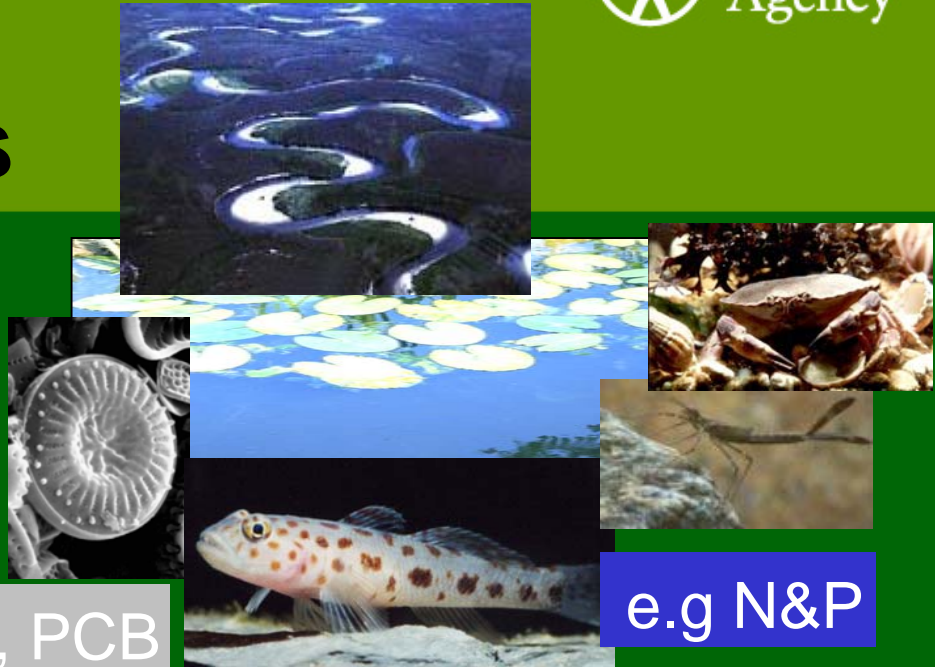
Artificial waterbodies

Wetland/terrestrial ecosystems



Status Objectives

- Surface water status assessed using:
 - Ecological status
 - Chemical status

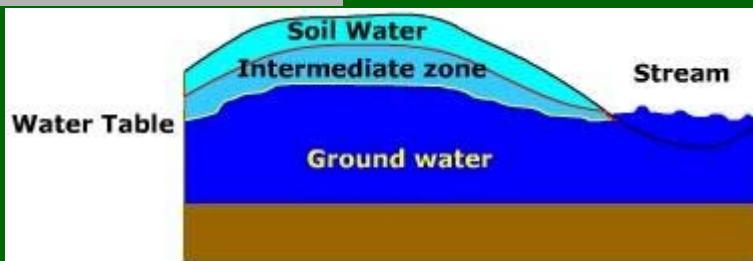


Zn, Cu, PCB
Pb, PAH....

e.g N&P

Zn, Cu, PCB
Pb, PAH....

- Groundwater status assessed using:
 - Quantitative
 - Chemical



- Default objective is “good SW/GW status”

WFD Objectives

Surface Waters

Status Objectives

No Deterioration

Cessation/reduction
of pollution from PS
and PHS

Protected Areas

Groundwaters

Status Objectives

No Deterioration

Prevention or limit
input of pollutants

Trend reversal

Protected Area

creating a better place

Status Objectives

Alternative Objectives

extended deadline

less stringent objectives

different objectives for Heavily Modified
and Artificial water bodies

different objectives for new modifications
and new sustainable development
activities

Only apply where certain conditions are met

Programmes of Measures

Programme of measures

- set out within RBMP
- sets out the plan of how to meet WFD Environmental Objectives

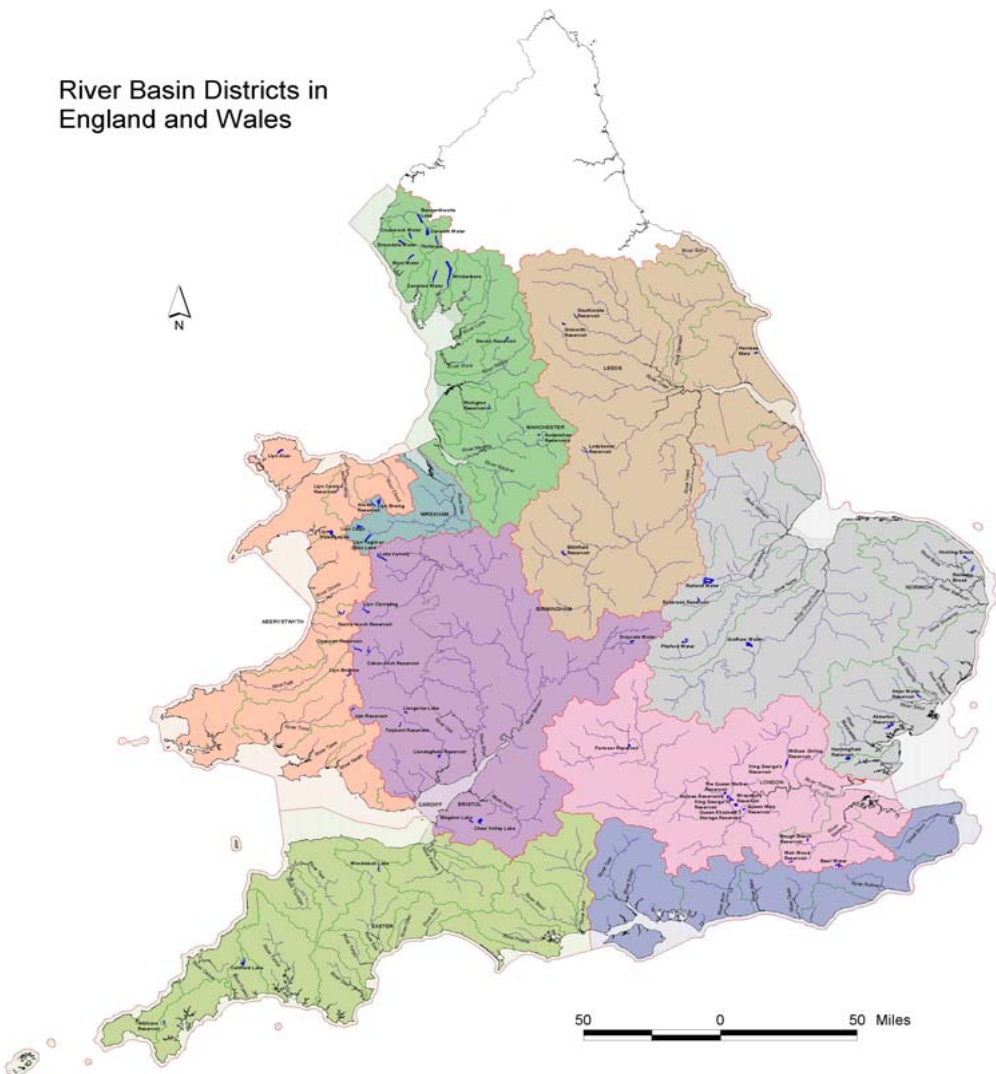
Basic measures

- obligatory
- existing EU Legislation
- controls on main pressures

Supplementary measures

- optional
- non-exhaustive list of measures
- projects, initiatives, codes of practice

River Basin Districts in England and Wales



KEY			
	River Basin District Boundary		Groundwaters in England and Wales
	Coastline of England and Wales		Dee
	National Boundaries		Humber
	River Basins		North West
	Rivers with a catchment greater than 100km ²		Severn
	Lakes with a surface area greater than 1km ²		South East
	Selected Cities		South West
			Thames
			Western Wales
			Coastal Waters within River Basin District
			Anglian
			Humber
			North West
			South East
			South West
			Western Wales
			Estuaries within River Basin District
			Anglian
			Dee
			Humber
			North West
			Severn
			South East
			South West
			Thames
			Western Wales

This map is reproduced from Ordnance Survey material with the permission of Ordnance Survey on behalf of the Controller of Her Majesty's Stationery Office © Crown copyright. Unauthorised reproduction infringes Crown copyright and may lead to prosecution or civil proceedings. Environment Agency, 100026380, (2003). © Environment Agency



River Basin Districts

after place

River Basin Management Plan

Statutory strategic regional plan for water

List the environmental objectives for each water body

Summary of Programmes of Measures

Approved by Secretary of State and/or National Assembly for Wales

creating a better place

1st River Basin Management cycle

1. Inception stage: *Jan - Dec 2006 (12 months)*

- Establish River Basin District Liaison Panels
- Initial understanding of RBD issues
- Produce RBD *Statement of Steps and Consultation Measures*)

*** Consultation: 6 months – start winter 2006 ***

Stakeholder engagement

National

National Stakeholder Group

River Basin District

Liaison Panel (co-deliverers)

Catchment

Agency-led initiatives

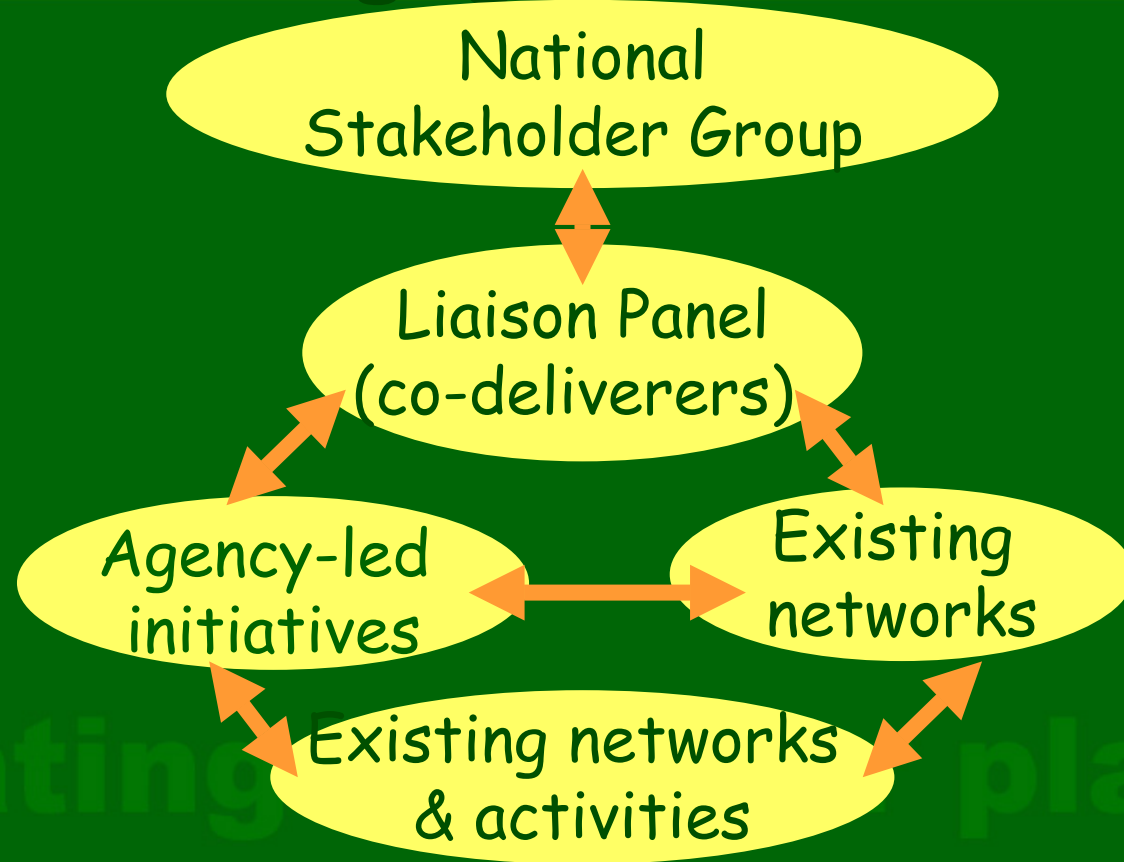
Existing networks

Community

Existing networks & activities



Environment Agency facilitated links



Stakeholder engagement

RBD level: Liaison Panels

- 15 co-deliverers representative of the interests in the RBD
- Their roles will be:
 - discussion and negotiation about the content of the RBMP and the measures which should be put in place;
 - scrutinising the ongoing river basin planning process;
 - tracking and chasing up progress with implementation.
- Meetings approximately once every three months

Creating a better place

1st River Basin Management cycle

2. Significant issues stage: *October 2006 – July 2007 (10 months)*

- Identify main pressures, risks and impacts
- Identify default environmental objectives
- High level strategic assessment including possible scenarios for the Programme of Measures
- Produce *Summary of Significant Water Management Issues*

*** Consultation: 6 months - start summer 2007 ***

1st River Basin Management cycle

3. Draft RBMP stage: *Aug 2007 - Dec 2008 (17 months)*

Development of scenarios for the Programme of Measures

- Detailed analysis of cost effectiveness and disproportionate costs
- Suggest alternative objectives for each scenario
- Produce *draft River Basin Management Plan*

creating a better place

* Consultation: 6 months - start winter 2008 *

River Basin Management Plan

Statutory strategic regional plan for water

List the environmental objectives for each water body

Summary of Programmes of Measures

Approved by Secretary of State and/or
National Assembly for Wales and/or Scottish
Executive

creating a better place

Complexity - Role of Economics

Cost effectiveness analysis

Disproportionate cost analysis

Collaborative Research Programme

creating a better place

Types of Measures

Policies

- Prevent Deterioration

- Opportunistic improvements

Spatially based

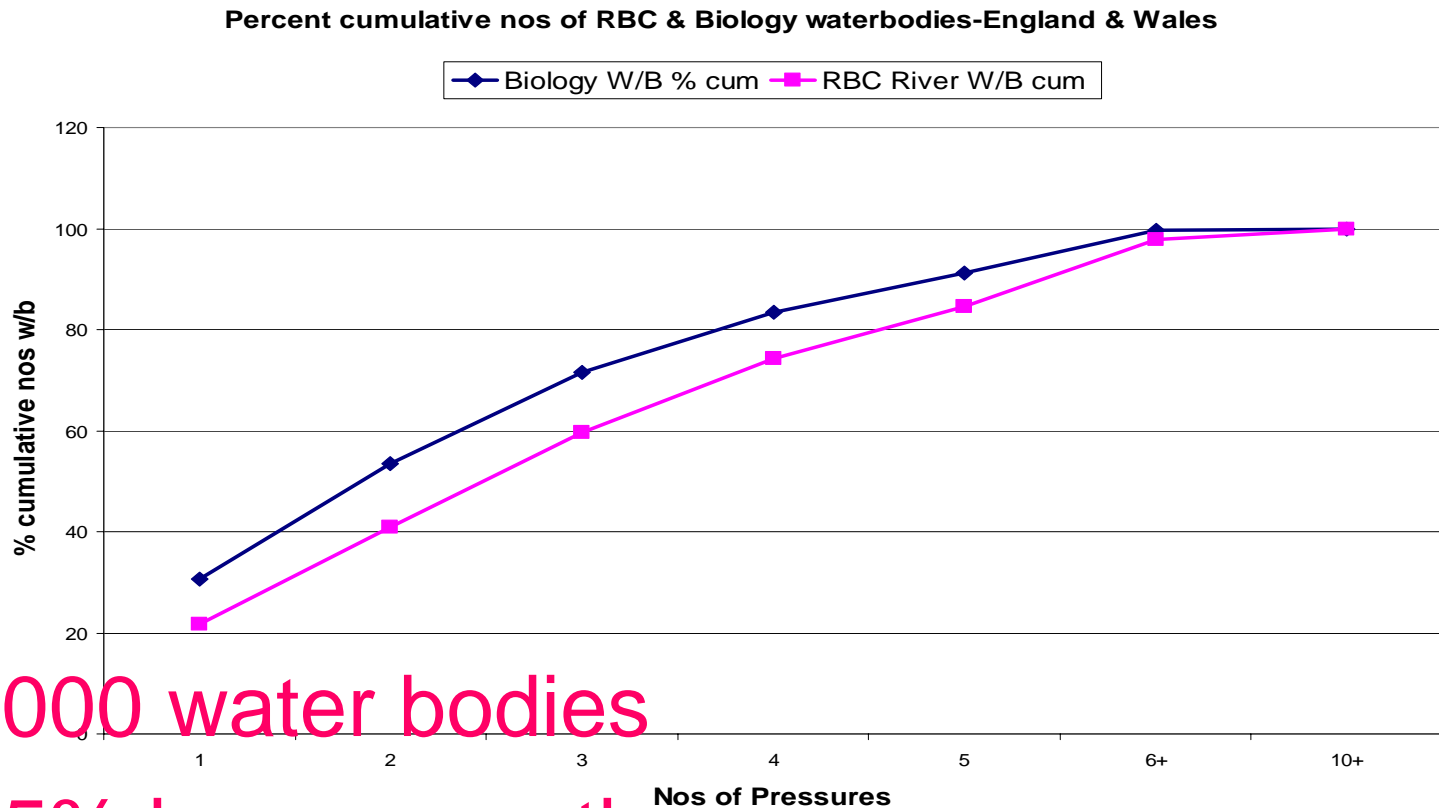
- National, RBD, catchment, coastal zone

Site specific

- discharge, weir, contaminated land site

Basic and supplementary

Complexity - pressures



> 6000 water bodies

> 75% have more than one pressure

Complexity - institutions

Public bodies

creating a better place

British Waterways
Conservation Boards
Countryside Agency
Countryside Council for Wales
Centre for Environment, Fisheries and
Aquaculture Science (including the
Fish Health Inspectorate)
Coast Protection Boards
Coastal Landowners
Crown Estate Commission
Department for Transport
Drinking Water Inspectorate
English Nature
Food Standards Agency
Forestry Commission
Government sponsored partnerships
Highway Authorities
Internal Drainage Boards
Local Fisheries Committees

Local Authorities in England and Wales
Local Authorities in Scotland
Maritime and Coastguard Agency
Ministry of Defence
National Assembly for Wales
National Parks Authorities (including
Norfolk and Suffolk Broads Authority)
Navigation, Harbour and Conservancy
Authorities
OFWAT
Port Health Authorities
Regional Assemblies
Regional Development Agencies
Rural Development Commission
Scottish Environment Protection Agency
Scottish Executive
Scottish Fisheries Protection Agency
Scottish Fisheries Research Services
Scottish Natural Heritage

1st River Basin Management cycle

4. Final RBMP stage: *Jan - Dec 2009 (12 months)*

Review of consultation responses and final appraisal

- Select preferred scenario, including final objectives and summary of the Programme of Measures
- Submit to Secretary of State/National Assembly for Wales for approval
- Publish *first RBMP* – Dec 2009

1st River Basin Management cycle

*** Government submits first RBMP to European Commission - March 2010 ***

5. Implementation stage: *Jan 2010 - Dec 2012 (3 years)*

- Programme of Measures fully operational (end Dec 2012)
- Limited adjustments to Programme of Measures as needed
- *Programme of Measures implementation progress report*
(by end Dec 2012)

1st River Basin Management cycle

6. Ongoing implementation & review stage:

Jan 2013 - Dec 2015 (3 years)

- Ongoing implementation of the Programme of Measures, with limited adjustments as needed
- Review of first cycle of river basin planning
- Second cycle of river basin planning started (planning stages completed)
- First cycle of river basin planning completed (by end Dec 2015)

Further Information

www.environment-agency.gov.uk/wfd

Briefing notes



Environment Agency - The Water Framework Directive - Microsoft Internet Explorer

File Edit View Favorites Tools Help

Back Forward Stop Search Favorites

Address http://www.environment-agency.gov.uk/subjects/waterquality/517209/1version=18lang=en

Text Only Tuesday 3 February 2004

You are in: Subjects > Water Quality > The Water Framework Directive

ENVIRONMENT AGENCY

HOME NEWS ABOUT US CONTACT US HELP

Choose a section SEARCH SITE

Water Quality

The Water Framework Directive

The EC Water Framework Directive is a new piece of legislation that will establish a new integrated approach to the protection, improvement and sustainable use of Europe's rivers, lakes, estuaries, coastal waters and groundwater.

The Directive intended to enhance waterways and wetlands throughout Europe, to make sure we use water in a sustainable way, to reduce water pollution and to lessen the effects of floods and droughts.

To find out about the Water Framework Directive in detail, and how it relates to the Environment Agency's work, click on the links below:

- **WFD - An Introduction**
An introduction to the Water Framework Directive, its aims and the way the Environment Agency has divided the tasks required for implementation
- **Water Framework Directive - The UK situation**
Provides a description on implementing the Water Framework Directive from a UK perspective
- **European Guidance**
Provides guidance documents which have been developed by European working groups with the aim of ensuring a common understanding and approach to implementation of the WFD across Europe

In this section:

- Water Quality
- WFD - An Introduction
- The UK situation
- European Guidance
- Our approach to the WFD
- News/Events
- FAQs
- Information Sources

See also:

This page has the following themes: (better waters) Sustainability

We are not responsible for the content of other

Briefing Note



Fish, Fisheries and the Water Framework Directive

The Water Framework Directive (WFD) will have implications for fish and fisheries. This Brief gives our current understanding and position with regard to some of the key issues.

Key issues

- Current fisheries consultation processes and stakeholder involvement fits in well with the approach required by the WFD.
- Fish are specifically mentioned in the WFD as a biological quality element and, as such, populations must be monitored and assessed as part of the ecological status of inland and estuarine water bodies.
- The WFD will offer opportunities to cover water bodies not monitored extensively at present by fisheries staff, such as lakes, artificial water bodies (most canals) and transitional waters (estuaries). When and how monitoring is carried out, proposed and reported will be resolved in due course.
- Information Systems development, either within the current National Fisheries Population Database (NFPD) and/or specifically for the WFD is an issue that has been raised and must be addressed.
- The Agency is considering ways in which the Salmon Action Plans (SAPs) and Fisheries Action Plans (FAPs) may be fully harmonised with River Basin Planning (RBP) under the Directive.

The WFD and fish

The WFD focuses on the use of environmental objectives and uses local ecological indicators to assess the status of water bodies. Fish are one of the biological quality elements that must be included in the assessment of status for rivers, lakes, canals, reservoirs and estuaries.

In the case of rivers and lakes the WFD requires an assessment of fish species composition and abundance as well as the age structure of the fish community (this last parameter is not required in transitional waters). Current surveys for the Fisheries Monitoring Programme (FMP) cover these parameters on inland rivers and adaptation of the National Fisheries Population Database (NFPD) will enable information regarding these data to be reported. The current survey programme will need to be extended to adequately cover lakes, canals and transitional waters.

Fisheries in the Agency

The Environment Agency's fisheries function has the specific responsibility, under the 1975 Salmon and Freshwater Fisheries Act (SFFA), to "maintain, improve and develop fisheries". Principally, this has been undertaken in the past on a catchment basis at the local level, with advice from Local Fisheries Groups and the Regional Fisheries, Ecology & Recreation Advisory Committee supported by national structures and staff responsible for the production of policies and planning to deal with issues of national and international importance.

e-mail: waterframeworkdirective@environment-agency.gov.uk

Further Information

13 December - Defra/WAG consultation on River Basin Planning Guidance

December - Agency's framework for river basin planning - summary

January - Agency's framework for river basin planning

creating a better place